

SHARP®

WORKGROUP COLOR DOCUMENT SYSTEMS

POWERFUL PERFORMANCE. UNCOMPROMISING QUALITY. TRUE MULTI-TASKING.



MX-3501N
MX-4501N



THE RENAISSANCE OF COLOR

MX-3501N/MX-4501N

THE PERFORMANCE AND RELIABILITY YOU EXPECT—WITH THE ADDED VALUE OF BRILLIANT COLOR

Sharp's new MX-3501N and MX-4501N workgroup color multifunction document systems redefine the standard for productivity. With uncompromising quality and outstanding reliability, the MX-3501N and MX-4501N deliver all the functionality today's growing businesses need, along with the added benefits of high-quality, cost-effective color. Best-in-class multifunction features allow you to work smarter and faster than ever. These versatile, scalable systems can easily copy, print, scan, fax, email or store your files with great efficiency. But that's only the beginning. The new MX-3501N and MX-4501N both offer Sharp's newest innovation, **Open Systems Architecture** (Sharp OSA). Designed to boost productivity, Sharp OSA gives you one-touch access to your business applications right from the LCD display, offering a new realm of control and convenience. With advanced web-based management and easy-to-use tools, monitoring and containing costs is effortless, so keeping an eye on the bottom line is never an issue. And for unparalleled security, Sharp's new MX-3501N and MX-4501N can protect your data by securing walk-up, scan and network access. With several layers of device protection, Sharp can help keep your business ahead of regulatory compliance.





RAISING THE BAR FOR MULTI-TASKING AND PRODUCTIVITY

Innovative

Efficient

Secure

Scalable

Full Color

- Extraordinary 800 MHz **multi-tasking color** document system with copy, print and network scanning standard
- Versatile application integration with Sharp's **Open Systems Architecture** enables users to access network applications right from the LCD panel
- Sharp's award winning **multi-level document and network security**
- Standard 150-sheet duplex single pass document feeder with **Color Scan²**
- Large **5,600-sheet** maximum on-board paper supply (1,100 standard)
- Standard **80 GB HDD** allows greater job queuing and document filing
- **Customizable**, easy-to-navigate touch-screen display
- One-touch **ImageSEND** facilitates scans to USB devices, network folders, email and more
- Space-saving **Inner Finisher** or **Saddle-stitch Finisher** and **hole-punch options**
- PCL6/PCL5c printing with **Direct Print** and PostScript 3 option
- Advanced **web-based device management** and on-board user manuals
- Integrated **LDAP and User Authentication** for secure scanning
- Efficient **Card Shot, Page Stamp** and **Tandem Copy**
- Environmentally focused; **ENERGY STAR®** and **RoHS compliant**
- Optimized Fax option includes **PC Fax** and **Inbound Routing**
- **My Sharp** web-based 24/7 training

ADVANCED FEATURES



OPTIMIZE PRODUCTIVITY WITH HIGH-PERFORMANCE FEATURES THAT GET THE JOB DONE

THE TOTAL PACKAGE

With impressive speeds at 35 ppm in both B&W and Color, the MX-3501N can easily keep up with the demands of busy offices and workgroups. The faster MX-4501N delivers a speedy 45 ppm in B&W and 35 ppm in color. With an incredible **5,600-sheet maximum paper capacity** and standard **150-sheet duplex single pass document feeder**, these powerful performers can handle even the largest projects with ease. With trayless duplexing, electronic sorting and integrated offset stacking, the MX-3501N and MX-4501N make organization and distribution effortless. Front-loading paper drawers and easy-to-change toner cartridges simplify maintenance. And if that's not enough, new **long-life consumables** and supplies minimize service calls, resulting in lower operating costs.

COLOR SCAN² TECHNOLOGY DELIVERS TWICE THE PRODUCTIVITY

Speed up your workflow with Sharp's innovative **Color Scan² technology**. With simultaneous scanning of 2-sided documents, the MX-3501N and MX-4501N can easily process large-scale projects with incredible efficiency. And since the document is scanned only once, productivity and reliability are significantly increased.

INNOVATIVE DOCUMENT FILING

For even more efficiency, the MX-3501N and MX-4501N offer convenient **Document Filing**. Businesses can now maintain consistency by standardizing and storing frequently used files such as fax cover sheets, distribution forms, and more. With **30 GB of storage capacity**, everyone can retrieve and share documents. Need to restrict access to select users? Not a problem. With private storage features, PIN-code access, and **My Folders**, you can easily store sensitive documents securely. And with Sharp's new **Quick Folders**, you can temporarily store and retrieve documents with fast, one-touch simplicity. Plus, an advanced backup system ensures that your files are safe and secure.



MX-Series shown with Saddle-stitch Finisher, Hole Punch and Paper Desk options.

BEST-IN-CLASS IMAGE QUALITY

Sharpen your business communications with crisp, clear images and dazzling color. Create dynamic proposals and newsletters that get noticed and make a statement. Sharp's

micro-fine toner technology and **Image Stabilizing System** ensure color accuracy from the first page to the last, so your documents always look good.

Micro-fine Toner provides enhanced image definition

Uniform Density ensures consistent output page after page

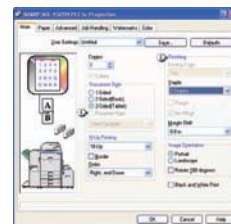


Advanced Image Stabilization monitors ambient conditions and ensures optimal color balance

Advanced Laser Technology with individual scanning units provides clear, crisp images and text

OUT-OF-THE-BOX NETWORK PRINTING

With simple plug and play operation, the MX-3501N and MX-4501N offer 600 x 600 dpi B&W and Color printing right from your desktop.



Time-saving features such as cover page printing, overlay print and pamphlet mode rival the results you'd get from quick printers. You can even save your preferences for fast recall. And with the optional Postscript driver, you get extensive color controls, as well as convenient PDF printing.

ADVANCED FINISHING FEATURES DELIVER PROFESSIONAL RESULTS

Easily save time and money by completing color jobs in-house. Presentations or newsletters once sent out for printing can easily be bound (three-position or hole-punched with the compact **Inner Finisher** or **Saddle-stitch Finisher** options). You can also create professionally finished color pamphlets and brochures with the Saddle-stitch Finisher.



Inner Finisher and Hole punch options



Saddle-stitch Finisher, Hole Punch and Paper Desk options



VERSATILE SCALABILITY

SHARP'S OPEN SYSTEMS ARCHITECTURE CAN LEVERAGE YOUR INVESTMENT AS YOUR BUSINESS NEEDS EVOLVE.

The MX-3501N and MX-4501N are enabled with Sharp's newest innovation—**Open Systems Architecture** (Sharp OSA). Designed to enhance the way you work, Sharp OSA delivers an entirely new realm of productivity by enabling users to access applications directly through the LCD display. With Sharp OSA, the MX-3501N and MX-4501N become a gateway into your network, providing fast, flexible access no matter where you are in the office. Sharp OSA enables you to truly customize your document workflow and manage your files easily, efficiently, and securely. It's a completely new way of working that opens the door to increased efficiency. And since Sharp OSA utilizes industry-standard network protocols such as SOAP, XML, and XHTML, Sharp's software partners can deliver customized solutions to your business faster than ever.



SHARP OSA AT A GLANCE

- Automate tasks and save time with seamless integration between MFPs and network applications
- Centralized applications minimize set-up and installation on multiple MFPs
- Eliminates repetitive tasks and streamlines workflow, increasing efficiency
- Maximize your return on investment with tighter integration between your IT assets
- Industry standard programming results in faster deployment of new solutions



INDUSTRY-LEADING SECURITY PROTECTS YOUR ASSETS

DATA SECURITY

To help secure your electronic documents, the MX-3501N and MX-4501N document systems offer several layers of network and data security to protect valuable data. As the leader in office equipment security, Sharp enables IT professionals to safely deploy digital copying, printing, scanning and faxing in any business or government environment.



SECURE WALK-UP ACCESS

The MX-3501N and MX-4501N utilize an advanced Account Management System, which enables administrators to setup authority groups for up to 1,000 users. Enabled either by account code or user authentication login, this easy-to-use system can lock out unauthorized walk-up users, as well as help your company control costs by restricting color output and other features.



SECURE THE OUTPUT

To protect your printed documents from unauthorized viewing, the MX series offer Confidential Printing, which requires users to enter a PIN code in order to print their queued document. Additionally, Secure Fax Release ensures received fax documents are held in memory until an authorized user enters a PIN code.



SECURE NETWORK SCANNING ACCESS

To protect your network from unauthorized email communications, the MX series support user authentication, which requires users to login before performing any network scanning operations.



SECURE DEVICE ACCESS OVER THE NETWORK

To restrict access to the device over the network, the MX series offers Secure Socket Layer (SSL Encryption) IP/MAC address filtering, protocol enable/disable and port management for maximum security.



SECURE YOUR DATA

To protect your data, the MX series offer an optional data security kit, which encrypts document data using 128-bit encryption. Additionally, the data security kit erases the memory on the hard drive by overwriting the encrypted data up to seven times, offering an unprecedented level of assurance.



SECURE THE AUDIT TRAIL

Sharp offers hardware and software accessories that help you control, access, and track usage across your entire office equipment fleet.

These scalable security offerings aim to protect your intellectual property, preserve confidential information and help your business to meet regulatory requirements, such as the Health Insurance Portability and accountability Act (HIPAA), and the Gramm Leach Bliley Act (GLB). For additional information visit: www.sharppusa.com/security

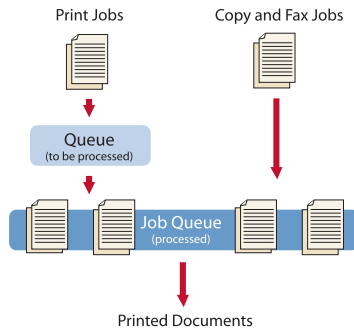
Security Kit not available at time of launch

STREAMLINE YOUR WORKFLOW WITH POWERFUL FEATURES

Whether you're an Administrator or desktop user, the MX-3501N and MX-4501N are incredibly easy to use. The intuitive, touch-screen display is easy to navigate, and provides instant access to powerful distribution features. You can even customize specific "keys" to store frequently used settings or to recall recurring jobs, so making adjustments is a snap. Plus, with separate copy buttons for B&W and color, users can easily select what they need.

DUAL JOB QUEUES FOR ADVANCED PRODUCTIVITY

The new MX-3501N and MX-4501N feature a multi-tasking controller that ensures that copy, fax and print jobs output continuously for optimum efficiency. Whereas traditional controllers perform one function at a time, the MX-3501N and MX-4501N can process incoming jobs even while existing jobs are output.



AWARD-WINNING NETWORK SCANNING

With Sharp's powerful ImageSend™ technology, the MX-3501N and MX-4501N become powerful distribution hubs that centralize document workflow, reduce overnight courier costs, and save time. Sophisticated network scanning enables you to send files to any of seven destinations...Email, Desktop, FTP, Network Folder (SMB), USB, Fax and i-Fax. The Send to Group mode allows you to mix group broadcasts to Email, Fax, and Internet Fax for increased efficiency.*



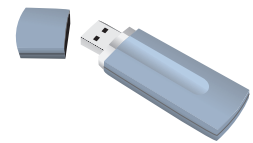
A larger, easy-to-read touch-screen display with customizable "keys" is just one of several enhancements to the operation panel. Separate buttons for B&W and Color make copying a snap.

SECURE SCANNING AT YOUR FINGERTIPS

The MX-3501N and MX-4501N minimize the risk of unauthorized scanning with integrated **User Authentication**. The advanced controls allow you to configure the MX-3501N and MX-4501N to require User Authentication via your company's LDAP server with up to three levels of identification. This protects sensitive documents from being scanned, faxed or emailed—so your data is never compromised.

CONVENIENT USB SUPPORT

For advanced portability and convenience, the MX-3501N and MX-4501N support popular USB memory devices. Easily scan files directly to a USB device, or simply plug in and print directly without copying files back and forth. Sharp's MX-3501N and MX-4501N support industry-standard file formats including TIFF, JPEG, PDF, and Encrypted PDF.*



POWERFUL SUPER G3 FAXING

With lightning-fast speed, the optional **Super G3 fax kit** delivers powerful fax capabilities. The ultra-efficient MX-3501N and MX-4501N can staple and/or copy inbound faxes, so your documents are collated and ready to distribute. With efficient **Inbound Fax Routing**, faxes can be forwarded directly to your email address. Authorized users can easily manage settings right from their PC through the user-friendly Home Page. And for additional savings, the optional **B&W Internet Fax expansion kit** can help reduce long-distance phone costs.



*Some destinations require optional equipment

DOCUMENT MANAGEMENT

INTEGRATED, EASY-TO-USE SOFTWARE PROVIDES COMPREHENSIVE DOCUMENT CONTROL

The feature-rich MX-3501N and MX-4501N are sophisticated, yet exceptionally user friendly. To help you manage all of the versatile features of the MX-3501N and MX-4501N, Sharp designed the **Administration Utility Suite**, a collection of **easy-to-use software** that simplifies installation and management. This broad suite of tools delivers all the control you need from walk-up user access to complex network management.



"IT Friendliness" Award

THE EMBEDDED WEB PAGE DELIVERS INSTANT DESKTOP ACCESS

Manage advanced features of the MX-3501N and MX-4501N right from your desk with Sharp's easy-to-use Home Page. Set personalized scanning destinations, profiles, web-links, and fax distribution features. You'll also gain access to My Sharp, a customized website for on-demand training and support.



SEE THE WHOLE PICTURE WITH PRINTER ADMINISTRATION UTILITY

View devices on the network, install features and distribute drivers over the network—all from one single interface. Monitor device usage for both B&W and Color jobs, set printing priorities or move jobs to different devices to expedite workflow.

KNOW WHAT'S HAPPENING WITH PRINTER STATUS MONITOR

Designed for both managers and desktop users, Printer Status Monitor allows you to view printer conditions, check paper levels, toner, and more all through an easy-to-use interface.

INTEGRATE SCANNED FILES WITH SHARPDISK™

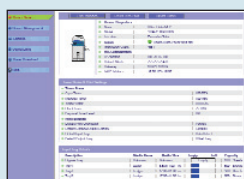
With Sharpdesk document management software, you can easily integrate scanned documents into your everyday workflow. Organize, edit, and convert—even combine several scanned files into one document. And with full text search capabilities, users can retrieve documents faster than ever.

REDUCE DOWNTIME WITH REMOTE EMAIL DIAGNOSTICS

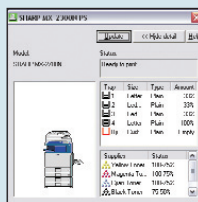
Now managers can stay on top of device productivity. Key operators can automatically receive meter reads and specific diagnostic information about the MX-3501N and MX-4501N sent right to their desktop.



Embedded Web Page



Printer Administration Utility



Printer Status Monitor



Sharpdesk™

MX-3501N/MX-4501N SPECIFICATIONS

Main Specifications

Base Models	Color multifunction digital document system; 800 MHz multi-tasking controller 80 GB HDD with document filing, PCL5c/PCL6 network printing/scanning, Scan ¹ single-pass feeder, auto duplex, two 500-sheet paper drawers and 100-sheet bypass
Functions	Copy, print, network print, network scan, document filing, Sharpdesk and fax option ¹
Copy System	Laser, Dry Transfer, Organic Photo Conductor Ultra-Fine Toners/Developers, Magnetic & Heat Process
Copy Size	Input: Min. 5 1/2" x 8 1/2", Max. 11" x 17" Output: Envelopes, Letter, Letter-R, Legal, Ledger & 12" x 18"
Copy Speed	MX-3501N: 35 ppm B&W / 35 ppm color MX-4501N: 45 ppm B&W / 35 ppm color (Based on letter size original using copy tray 1)
First Copy Time	Platen glass: 4.1 seconds MX-4501 (B&W); 4.7 seconds MX-3501 (B&W); 6.9 seconds (color); DSPF: 7.3 seconds (B&W); 13.1 seconds (color); Based on letter size original using copy tray 1 with laser-unit motor running
Warm Up Time	240 Seconds or less
Copy Data	25% to 400% Zoom (1% increments), 25% to 200% (DSPF); 9 R/E presets; 999 Continuous Copy
Scanning	Up to 60 pages/minute with 2-sided B/W originals at standard resolution (includes Fax & Internet-Fax) Up to 35 pages/minute with Color Copy or Scan originals at standard resolution
Original Feeder	Duplex Single Pass; 150-sheet capacity (using 20 lb. bond) Sizes: 5 1/2" x 8 1/2", 8 1/2" x 11", 8 1/2" x 11" R, 8 1/2" x 14", 11" x 17" (13-34 lb. bond)
Paper Feed	Standard: Two 500-sheet paper drawers (letter, legal, ledger, statement size) Optional: One 500-sheet paper drawer (letter, legal, ledger, statement size) or two 500-sheet paper drawers (letter, legal, ledger, statement size) and 3,500-sheet large capacity tray (letter size). See authorized dealer for configurations.
Paper Types	Paper drawers and large capacity tray: 16-28 lb. bond paper. Other paper types include plain, pre-printed, recycled, pre-punched, letterhead and color paper.
Bypass Tray	Capacity: 100 sheets (letter, legal, ledger, statement, 12"x18" & envelope size) Categories: Plain paper (16-28 lb. bond 60-105 gsm), Heavy paper (28-56 lb. bond / 90-110 Index / 106-209 gsm), Envelope (20-24 lb. bond / Monarch / Com-10), Tab paper (letter only). Other types include label stock, gloss paper, pre-printed, recycled, pre-punched, letterhead, color, and OHP film.
Output Tray	Main output tray (top) 500 sheets (face down); Option: Right-side tray 100 sheets (face down)
Duplexing	Standard automatic duplex copying and printing of up to 110 Index
Interface	Ethernet (10/100BaseT), USB 2.0 (host port), USB 2.0 (device port)
Memory	Standard 768 MB (copier memory); 640 MB (printer/network scanning) memory
Hard Disk	80 GB HDD; Document Filing: 30 GB • Main/Custom: Up to 4,200 pages or 3,000 files • Quick Folders: Up to 1,400 pages or 1,000 files
Resolution	Scan: monochrome / color: Max 600 DPI; Copy Output (B&W / Color): Max 600 DPI
Halftone	Equivalent to 256 gradations/2 levels (mono)
Color modes	Auto Color Selection, Full Color, B/W, Dual & Single Color Modes
Copy Features	Scan-once Print-many (Electronic Sorting), Offset-stacking, Auto Color Selection (ACS), Auto Paper Selection (APS), Auto Magnification Selection (AMS), Auto Tray Switching, Rotation Copy, Job Reservation, Tandem Copy, Book Copy, Margin Shift, Tab-paper Insertion, Edge Erase, Center Erase, Dual-page Copy, Cover Pages, Insert Pages, OHP Insertion, Job Build, Card Shot, Mirror Image, B/W Reversal, Centering, Proof Copy, 2-in-1, 4-in-1, Pamphlet, Photo Repeat, Multi-page Enlargement, Document Filing, Account Management, Job Programs, Stamp Mode (Date / Text / Page B&W / Color) ¹
Accounts	Up to 1,000 users. Supports user-number authentication (on device), login name/password (on device) or login name/password (on device via LDAP)
Firmware	Flash ROM update via USB and/or network
Power Source	AC 100-127 VAC, 60 Hz, 12 Amps
Power	Approx Max: 1440W; Sleep Mode: 13W Low Power Mode: 185W (MX-3501N) 223W (MX-4501N)
Weight	Approx. 282 lbs. (base model)
Dimensions	25 7/16" (w) x 26 3/8" (d), x 37 13/16" (h)

1 Some features require optional equipment
2 1,200 DPI and Postscript Printing requires optional PS3 Expansion Kit
3 Actual transmission time will vary based on line conditions.
Based on Sharp Standard Test Chart with approximately 700 characters, letter size in standard resolution
4 Option not available at time of launch

Network Printing System (standard)

Emulation	PCL6 / PCL5c compatible, optional PS3
Resolution	1,200 dpi (monochrome), 600 DPI, 300 DPI ¹
Print Drivers	Windows 98/ME, NT4.0 (with SP5 or later), 2000, XP, 2003 server; MAC OS 9, OSX (including 10.4) PPD only
Software	Print drivers, Printer Status Monitor and Printer Administration Utility
Features	Continuous, Duplex, Pamphlet, N-up, Image Rotation, Different Cover Page/Last Page, Transparency Inserts, Tabs, Carbon-copy Print, Fit-to-page, Poster, Margin Shift, Mirror Image, Watermarks, Overlay, Confidential, Confidential Batch, Release from Hold, Proof, Bypass, Job Priority, Job Control, Tandem and Direct printing (Note: some features not available on certain print drivers) ¹
Direct Printing	File Types: TIFF, JPEG, PCL, TXT, PDF, Encrypted PDF, and PS (PS Expansion Kit required) ² Methods: FTP, Web page, Email and USB memory
Interface	Ethernet; 10/100 BaseT; USB 2.0
OS Support	Windows 98/ME, NT 4.0, XP, 2003 Server. Novell Netware 3x, 4x, 5x, MAC OS 9, OSX, (including 10.4)
Protocols	TCP/IP for Windows and Unix environments including HTTP and SSL IPX/SPX for Novell and Ethertalk for Macintosh environments
Print Protocols	LPR, IPP, PAP, Raw TCP (port 9100), FTP, Novell Pserver/Rprinter
Security	Secure Socket Layer, IP/MAC address filtering, protocol filtering, port management, user authentication and document administration

Network Scanning System (standard)

Scan Output	Resolution: 600, 400, 300, 200 or 100 DPI
Image Formats	Monochrome: TIFF, PDF, Encrypted PDF Color / Grayscale: TIFF, JPG, PDF, Encrypted PDF Internet Fax: TIFF-FX, TIFF-F, TIFF-S
Compression	Mono: Uncompressed, G3 (MH), G4(MR/MMR) Color / Grayscale: JPEG (high, middle, low) Internet Fax: MH/MMR (option)
Destinations	Email, Desktop, FTP Folder (SMB), USB memory, Internet fax (option), Super G3 fax (option)
One-Touch	Up to 999 destinations (combined with scan destinations) and up to 500 Groups
Programs	48 total
Scanning Protocols	TCP/IP (includes SMTP, LDAP, FTP, SMB, POP, ESMTIP)
Security	Email server user authentication and user account control
Configuration Method	Web-based management; user/administrator level login security
Software	Sharpdesk desktop document management software (1 user license)

B&W Super G3 Fax Kit (option)

Transmission Data	Super G3, G3 (33.6 KBPS) with JBIG, MMR, MR or MH Compression by sheets fed simplex, duplex or off the glass; Max 400 DPI (ultra-fine) at approximately 2 seconds; JBIG ¹
Auto Dialing	Up to 999 destinations (combined with scan destinations) and up to 500 Groups
Inbound Routing	Forwards received fax data to Email
Originals	Up to 31.5" (for transmission)
Programs	48 (combined)
Memory	8 MB (exclusive)
Features	Quick on-line transmission, direct transmission, F-Code transmission/reception, rotate transmission, anti-junk fax reception, automatically staple received faxes, secure fax release, out of paper memory reception, auto redial, 2-in-1 transmission, duplex reception transaction reports, activity reports and PC fax ¹

Inner Finisher (option)

Output Capacity	Face down, 500 sheets (letter or legal) or 250 sheets (12" x 18", ledger, or legal)
Stapling	Plain paper, (letter, legal, or ledger size) with staple in front (1), rear (1), or both
Max. Pages for Stapling	50 sheets (letter size) or 30 sheets (legal, ledger or mixed same-width size)
Stapled Sets	30 bundles or 500 sheets (letter or statement size) or 30 bundles or 250 sheets (legal or ledger size)
Hole Punching	Optional hole-punch unit (3-holes/2-holes) MX-PNX1B

Saddle-Stitch Finisher (option)

Type	Console finisher with dual exit trays (mounts on left side of host machine)
Output Trays	Upper tray: Offset stack tray; Lower tray: Book tray for saddle-stitch
Output Capacity	1,000 sheets (letter/statement size) or 500 sheets (legal, ledger or letter-R size)
Output Data for Stapling	Face down; 30 sheets (letter/statement) or 25 sheets (legal, ledger or mixed same-width) using Plain paper, letter/legal/ledger size or mixed with staple in front (1), rear (1), or both
Saddle-Stitch	Center stitch/center folding (2 staples) letter/ledger paper sizes
Max Sets	Up to 10 sets (6-10 sheets per set) Up to 20 sets (1-5 sheets per set)
Punching	Optional hole punch unit AR-PN1B (2 holes/3 holes)

Large Capacity Tray (option)

Type	Large capacity paper feed desk
Paper Size	Letter size, 16-28 lb. Bond
Capacity	3,500 sheets
Paper Types	Plain paper, pre-printed, recycled, letterhead, pre-punched and colored paper

Optional Equipment List

MX-DEX3	Stand/1 x 500 Paper Desk
MX-DEX4	Stand/2 x 500 Paper Desk
MX-45ABD	Rolling Cabinet Base
MX-LCX1	Large Capacity Tray (requires MX-DEX3 or MX-DEX4 or MX-45ABD)
MX-FNX1	Inner Finisher
MX-FNX2P	Saddle-stitch Finisher/Paper Pass Unit
MX-PNX1B	Punch Unit (for Inner Finisher)
AR-PN1B	Punch Unit (for Saddle-stitch Finisher)
MX-TRX2	Exit Tray Unit
MX-PKX1	Postscript 3 Kit
MX-FWX1	Internet Fax Kit
MX-FXX1	Super G3 Fax Kit
AR-PF1	Bar Code Font Kit
MX-AMX1	Application Integration Module
MX-FRX2U	Data Security Kit ⁴
MX-PEX1	Fiery Print Controller (PostScript 3 incl.) ⁴

Supplies

MX-45NTBA	Black Toner Cartridge
MX-27NTCA	Cyan Toner Cartridge
MX-27NTMA	Magenta Toner Cartridge
MX-27NTYA	Yellow Toner Cartridge
MX-27NVBA	Black Developer
MX-27NVSA	Cyan/Magenta/Yellow Developer
MX-27NRSA	Drum



"IT Friendliness"
Award



As an ENERGY STAR[®] Partner, Sharp has determined that this product meets the ENERGY STAR[®] guidelines for energy efficiency.



SHARP ELECTRONICS CORPORATION
Sharp Plaza
Mahwah, NJ 07430-1163
1-800-BE-SHARP
www.sharppusa.com

Design and specifications subject to change without notice. Sharp is a registered trademark of Sharp Corporation. All other trademarks and registered trademarks are property of their respective holders.